

# box end park

The ideal venue...



CELEBRATE & ENJOY YOUR SPECIAL OCCASION AT BOX END PARK

# A special place...



Set amidst 100 acres of beautiful Bedfordshire Countryside along the banks of the River Great Ouse this stunning contemporary venue is the perfect setting for any celebration. In fact it is truly one of a kind. The impressive Canadian cedar building will take your breath away with its magnificent glass entrance hall, sweeping gallery and fabulous vistas - a fantastic example of premium modern architecture. Box End Park perfectly balances the stylish with the simple, the inspiring with the invigorating and the laid back with the lively.

At Box End Park we understand that choosing the venue for your event is one of the most important decisions but once you have booked the date with us you can sit back and breathe a sigh of relief that you have chosen the right place. The planning can begin.



“

*If you are organising an event or  
celebration, this is the place to come.  
The team think for you, inspire confidence  
from the first meeting and leave  
nothing to chance!*

*Barry & Ruth*

# The Maple Suite

---

The Maple Suite provides a stylish and contemporary backdrop to any event

---



The Maple Suite is a large, purpose built function and event facility.

The suite provides a stylish and contemporary backdrop to any event. Situated at the quietest end of the building this bright and airy room enjoys superb views over the Southern lake with double doors opening onto a large outdoor balcony.

The Maple Suite has its own private bar which is purpose built to cope with fast paced events and is stocked with all our premium lines to wow your guests at more intimate occasions.

The facility is self contained and has access to its own private toilets and also a lift so it is accessible for all users.

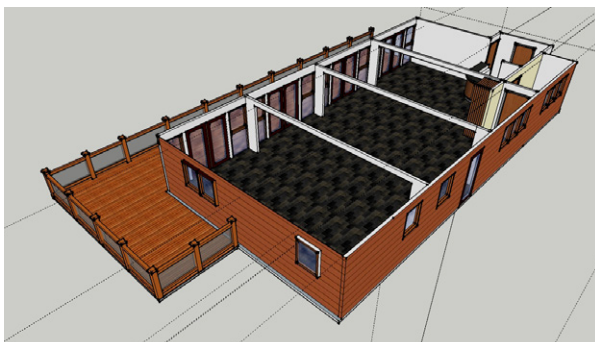
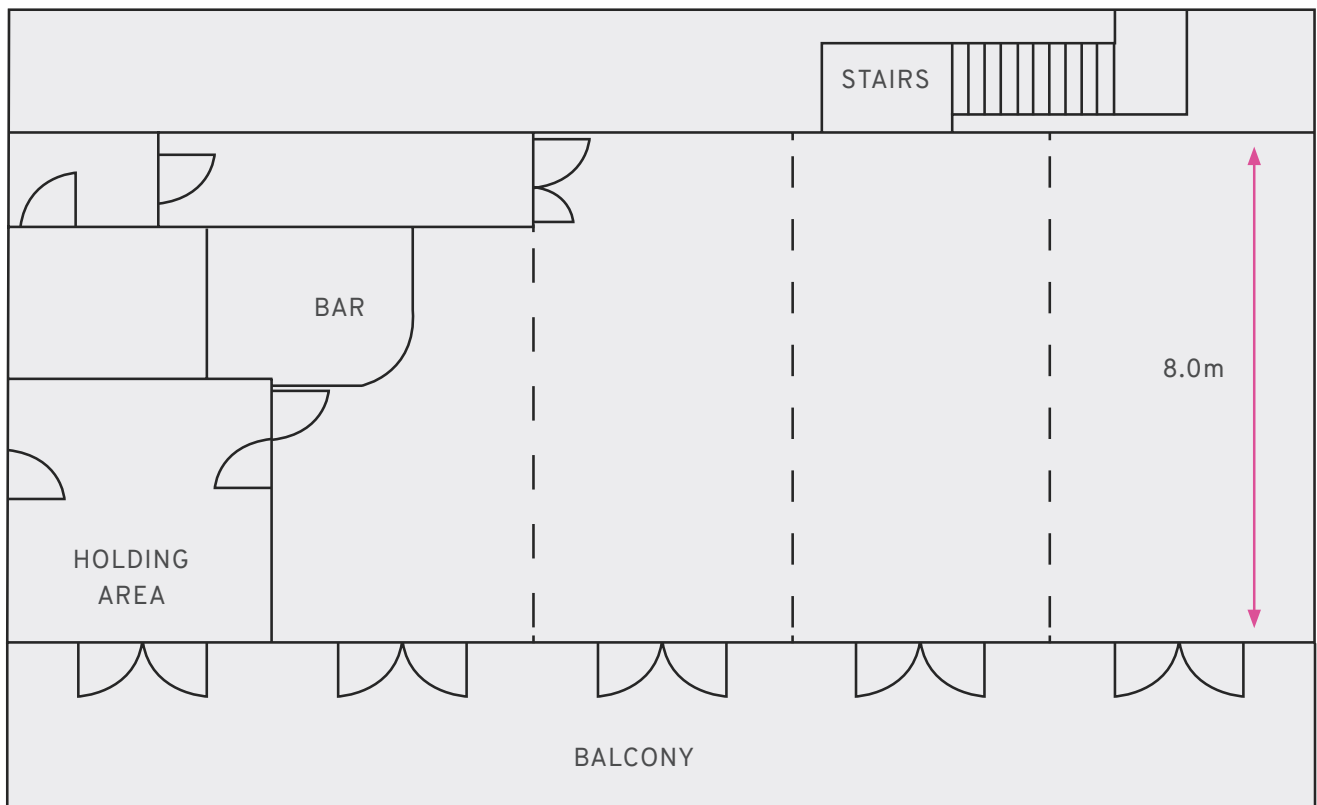
## A versatile space...

The Maple Suite is ideal for any occasion and its open plan design allows us uncompromised ability to set the space in a variety of ways giving us the flexibility to accommodate any style of event. Measuring in at approximately 16m x 8m the room is perfect laid out with formal dining tables for parties up to 70 or opening up the space for up to 120 people for freestanding events with evening entertainment.

From christenings, birthdays, anniversaries to wake receptions the suite is the perfect space to mingle and catch up or to dance the night away.

The large outdoor terrace overlooks the water sports lake and provides a great backdrop and breakout space for your guests to sit and enjoy the activities during the day or simply some fresh air in the evening.

With its own private kitchen we are able to cater for your event with our skilled chefs that are dedicated to your function needs.



# Event Catering

---

From afternoon tea to a seated three course meal, nothing is too much trouble

---



Whether you are looking for a small intimate afternoon tea, informal hog roast or a seated three course meal we are on hand to help. Combining seasonal ingredients sourced as locally as possible with a touch of tradition and flair our Head Chef, Sean Hazlett and his team of talented chefs will make your taste buds tingle.

If you are looking for an extra wow factor we can compile a bespoke menu fully tailored to your ideas and budget. Or if you need some guidance we have plenty of experience to offer to make sure your function is exactly as you would like it.

Our function and event catering pack offers a wide range of options that are popular with all size parties whatever their theme.

# Entertainment

---

Let your hair down and celebrate with your guests in the Maple Suite

---



The Maple Suite has a state of the art programmable lighting system that allows us to colour wash the walls for maximum impact for your guests. The system can be set up to match a colour to suit your theme and creates a fantastic atmosphere to help the event come to life.

Evening entertainment is also something we can assist with. We have contacts for discos and bands, photo booths and casino tables to horse racing nights allowing us to organise anything and everything so you can simply sit back and relax!

All our contacts are tried and tested and know our business and service expectations and they all carry the right level of personal liability insurance and all equipment is pat tested to current standards.

The Maple Suite carries a performing licence allowing us to play live music until 12.00 midnight. This coincides with the license permitted for the Suites bar which is also licensed until midnight. **For more information speak to our function sales team.**

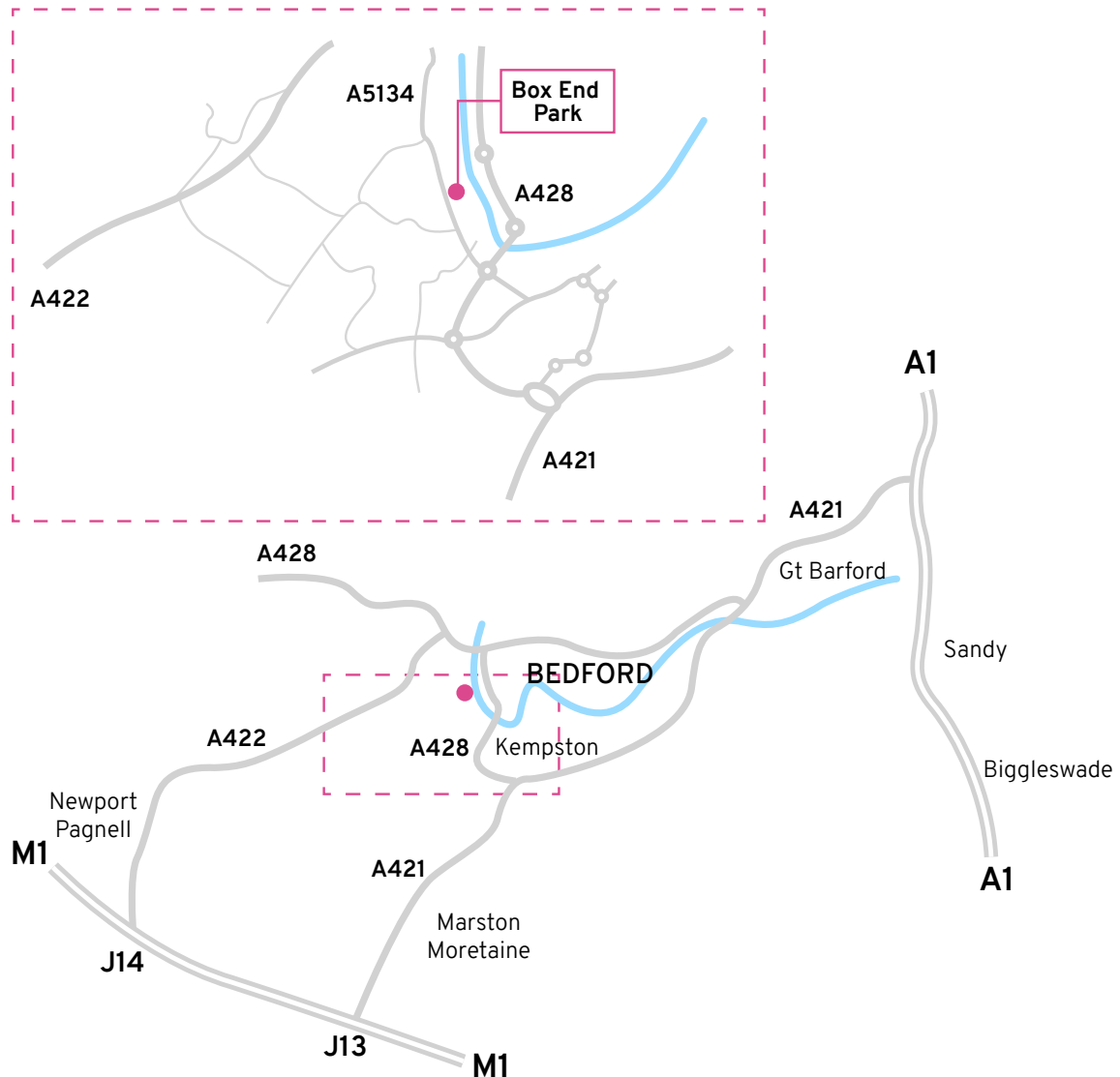


“

*The hospitality team were on hand throughout with information, advice and support covering catering, room decor, linen hire, entertainment and any other help we needed. This ensured the event was a success making many happy memories for our friends and family.*

*Angela & Perry*

# Contact Us



Box End Park, Box End Road, Kempston, Bedford, MK43 8RQ

Call us on **01234 846 223** or email **[corner5@boxendpark.com](mailto:corner5@boxendpark.com)** to discuss your plans in more detail.



**box end park**

[www.boxendpark.co.uk](http://www.boxendpark.co.uk)